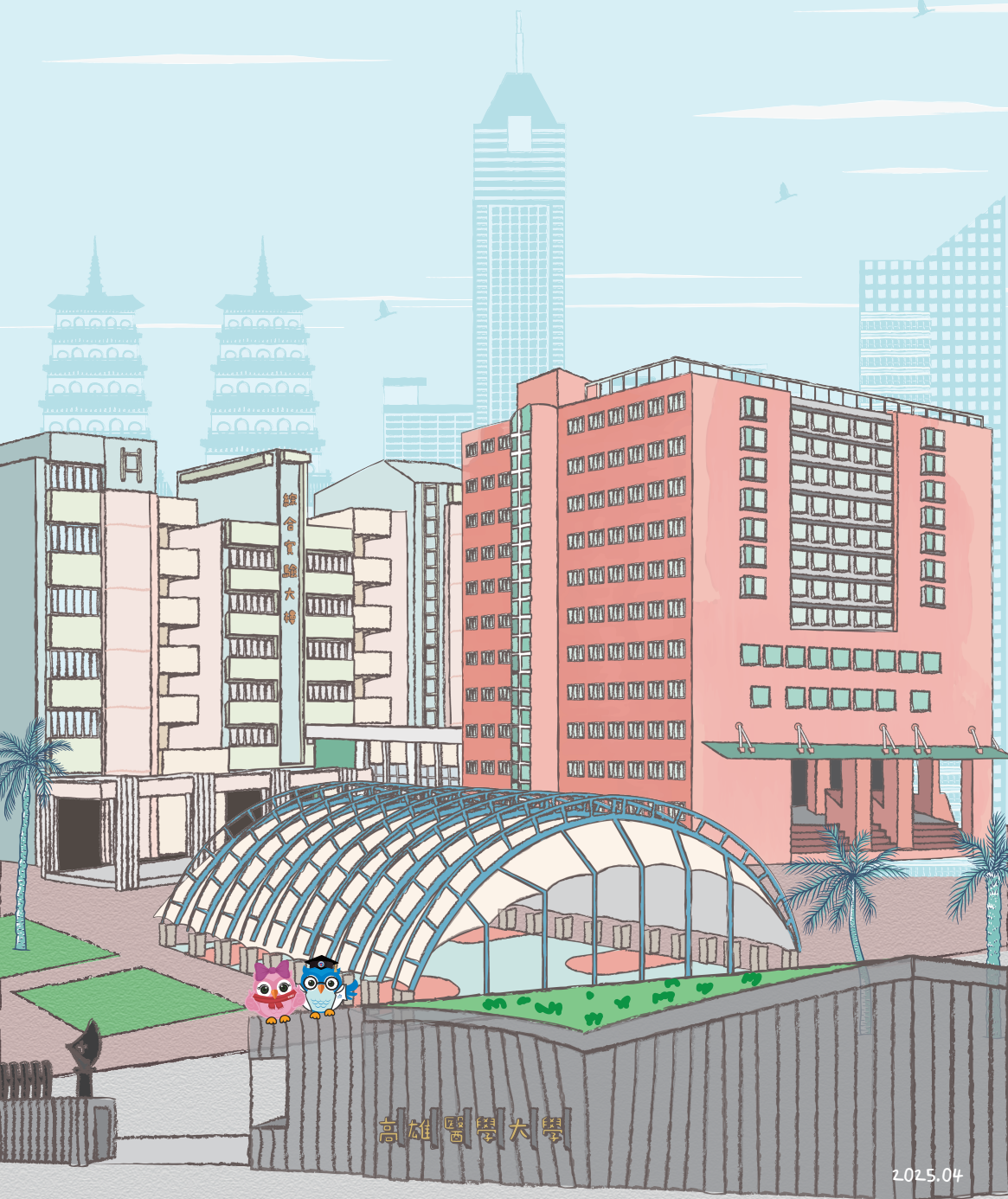




高雄醫學大學  
Kaohsiung Medical University







# 高雄醫學大學

KAOHSIUNG MEDICAL UNIVERSITY

The Asian Leading Medical University with Excellent International Programs  
Promoting Health Equality and Opening New Horizons

## 成立於1954年，臺灣第一所私立醫學大學

Established in 1954 - 1st Private Medical University in Taiwan.

## 本校教授獲選全球前2%頂尖科學家，共35位 (2024年美國史丹佛大學公布)

Stanford University reported in 2024 that 35 KMU professors are regarded as being among the top 2% of scientists globally.

## SDG3「良好健康與福祉貢獻」全球第6名，全國第1名 (2024年THE世界大學影響力排名)

Ranked top 6 globally and top 1 in Taiwan in SDG 3 (Good health and well-being) in the THE Impact Ranking 2024.

## 榮獲「醫療奉獻獎」人數居全國之冠

The number of recipients of the "Medical Contribution Award" is the highest among the universities in Taiwan.

## 中山高醫攻頂大學聯盟

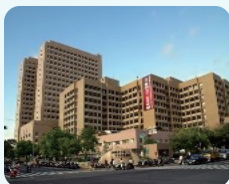
The NSYSU-KMU, Aim-for-the-Top Alliance: Abundant Academic Resources.

## 高醫哈佛學術聯盟

Harvard-KMU Alliance Foundation: Academic and Research Exchange Opportunities.

## 高醫附屬機構：全方位醫療照護與醫療訓練

KMU Affiliated Hospitals: Comprehensive Healthcare & Integrated Medical Trainings



附設中和紀念醫院  
Chung-Ho Memorial  
Hospital



高雄市立小港醫院  
Kaohsiung Municipal  
Hsiao-Kang Hospital



高雄市立旗津醫院  
Kaohsiung Municipal  
Cijin Hospital



附設高醫岡山醫院  
KMU Gang-Shan  
Hospital

## 醫學院 College of Medicine

學 (B) 學士 Bachelor  
碩 (M) 碩士 Master  
博 (P) 博士 PH.D.

醫學系 (學)

School of Medicine (B)

學士後醫學系 (學)

School of Post-Baccalaureate Medicine (B)

運動醫學系 (學) (碩)

Department of Sports Medicine (B) (M)

呼吸治療學系 (學)

Department of Respiratory Therapy (B)

醫學研究所 (碩) (博)

Graduate Institute of Medicine (M) (P)

臨床醫學研究所 (碩) (博)

Graduate Institute of Clinical Medicine (M) (P)

熱帶醫學碩士學位學程

M. Sc. Program in Tropical Medicine

環境職業醫學博士學位學程

Ph.D. Program in Environmental and Occupational Medicine

轉譯醫學博士學位學程

Ph.D. Program in Translational Medicine

生物醫學工程博士學位學程

Doctoral Degree Program in Biomedical Engineering

## 口腔醫學院 College of Dental Medicine

牙醫學系 (學) (碩) (博)

School of Dentistry (B) (M) (P)

口腔衛生學系 (學) (碩)

Department of Oral Hygiene (B) (M)



## 藥學系 College of Pharmacy

藥學系 (學) (碩) (博)

School of Pharmacy (B) (M) (P)

藥學系臨床藥學碩士班

School of Pharmacy – Master Program in Clinical Pharmacy

香粧品學系 (學) (碩)

Department of Fragrance and Cosmetic Science (B) (M)

天然藥物研究所 (碩) (博)

Graduate Institute of Natural Products (M) (P)

毒理學碩士學位學程

Master Degree Program in Toxicology

毒理學博士學位學程

Ph.D. Program in Toxicology

(學) (B) 學士 Bachelor

(碩) (M) 碩士 Master

(博) (P) 博士 PH.D.

## 護理學院 College of Nursing

護理學系 (學) (碩) (博)

School of Nursing (B) (M) (P)

高齡長期照護碩士學位學程

Master Degree Program in Aging and Long-Term Care

## 健康科學院 College of Health Sciences

公共衛生學系 (學) (碩) (博)

Department of Public Health (B) (M) (P)

醫學檢驗生物技術學系 (學) (碩) (博)

Department of Medical Laboratory Science and Biotechnology (B) (M) (P)

醫學影像暨放射科學系 (學) (碩)

Department of Medical Imaging and Radiological Sciences (B) (M)

職能治療學系 (學) (碩)

Department of Occupational Therapy (B) (M)

物理治療學系 (學) (碩)

Department of Physical Therapy (B) (M)

醫務管理暨醫療資訊學系 (學) (碩)

Department of Healthcare Administration and Medical Informatics (B) (M)

人工智慧健康產業應用碩士學位學程

The Master Program of AI Application in Health Industry

(學) (B) 學士 Bachelor

(碩) (M) 碩士 Master

(博) (P) 博士 PH.D.

## 生命科學院 College of Life Sciences

醫藥暨應用化學系 (學) (碩) (博)

Department of Medicinal and Applied Chemistry (B) (M) (P)

生物科技學系 (學) (碩)

Department of Biotechnology (B) (M)

生物醫學暨環境生物學系 (學) (碩)

Department of Biomedical Science and Environmental (B) (M)

生命科學院學士班

Bachelor Program of Life Science

生命科學博士學位學程

Doctoral Degree Program in Life Sciences

醫藥化學暨生物科技碩士班

Master Program in Medicinal Chemistry and Biotechnology

## 人文社會科學院 College of Humanities and Social Sciences

心理學系 (學) (碩)

Department of Psychology (B) (M)

醫學社會學與社會工作學系 (學) (碩)

Department of Medical Sociology and Social Work (B) (M)

性別研究所 (碩)

Graduate Institute of Gender Studies (M)



# 雙聯學制

DUAL PH.D. PROGRAM

## 合作學校 Institution & 本校合作學院 KMU Dept.



匈牙利賽格德大學  
University of Szeged (Hungary)

藥學院 College of Pharmacy

法國艾克斯馬賽大學  
Aix-Marseille University (France)

生命科學 College of Life Sciences

格里菲斯大學  
Griffith University (Australia)

七大學院 7 Colleges of KMU

美國希望之城國家醫學中心  
Irell & Manella Graduate School of  
Biological Sciences at City of Hope (USA)

七大學院 7 Colleges of KMU



美國加州大學爾灣分校  
University of California, Irvine (USA)

醫學院 College of Medicine

口腔學院 College of Dental Medicine

瑞典烏普薩拉大學  
Uppsala University (Sweden)

醫學院 College of Medicine

藥學院 College of Pharmacy



泰國朱拉隆功大學藥學院  
Faculty of Pharmaceutical Sciences at  
Chulalongkorn University (Thailand)

藥學院 College of Pharmacy

泰國朱拉隆功大學微生物系  
Department of Microbiology, Faculty of  
Sciences at Chulalongkorn University (Thailand)

健康科學院 College of Health Sciences

泰國清邁大學藥學院  
Faculty of Pharmacy at Chiang Mai University (Thailand)

藥學院 College of Pharmacy

泰國瑪希朵大學科學院及研究生院  
Faculty of Science and Faculty of Graduate  
Studies, Mahidol University (Thailand)

健康科學院 College of Health Sciences

# 最佳學習環境 X 最好的你

Ideal Learning Environment & Truly Unique Experiences

## Kartiko Arif Purnomo

Graduate Institute of Natural Products (Ph.D.)  
Indonesia

天然藥物研究所/印尼

回顧在臺灣的時光，我很感激能在高雄醫學大學接受優質的教育，也歸功於學費和生活費的獎學金。同時，感謝學校所有教職人員和臺灣人，他們總是友善和樂於助人，在臺灣學習和生活很愉快。



Looking back on my time in Taiwan, I am grateful for the opportunity to receive an excellent education at KMU thanks to a scholarship that covers my tuition and living expenses. Also, thanks to the KMU personnel and Taiwanese people, who are always pleasant and helpful, living and studying in Taiwan is a pleasure.

## Dr. Arputharaj Emmanuvel

M.Tech., Ph.D., Dept. of Medical Laboratory Science and Biotechnology (Ph.D.)  
Tamil Nadu, India

醫學檢驗生物技術學系/印度



台灣領先的研究設施、科學合作社群以及國家對創新的承諾，對我的專業成長有重要的影響。這裡的國際化環境不僅拓展了我的研究視野，也培養了我的全球視野，使我能更好地應對日益緊密聯繫的世界和技術迅速發展的挑戰。

Taiwan's cutting-edge research facilities, collaborative scientific community, and the country's commitment to innovation have significantly contributed to my professional growth. The international exposure here has not only widened my research horizons but has also fostered a global perspective, preparing me for the challenges of our interconnected world and rapid technological growth.



## Siriluk Winitchayothin 史依琳

School of Nursing (Ph.D.)  
Thailand

護理學系/泰國

我堅信高雄醫學大學的護理博士課程會預備我成為長期護理(LTC)護理師，擁有應對老齡化社會所需的專業知識。

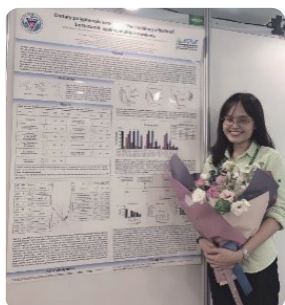


I firmly believe that the PhD program at Kaohsiung Medical University would support me to be an LTC nurse with challenging knowledge for an ageing society.

## Van Thi Tran Tran 文珍珍

Graduate Institute of Natural Products (Ph.D.)  
Vietnam

天然藥物研究所/越南



學校的學術訓練確實提升了我解決問題的能力，幫助我更好地將所學轉化為實務。我認為，如果可以的話，一生中應該嘗試一次出國留學，您會有全新的體驗。如果您在選擇大學時猶豫不決，高雄醫學大學是最好的選擇之一！

I feel that the academic training really improves my problem-solving skills and helps me better to apply the knowledge into practice. In my opinion, if possible, you should try studying abroad once in your lifetime, you will have brand-new experiences. And if you are hesitant when choosing universities, Kaohsiung Medical University is one of the best!

## Kim-Fong Kam 甘劍峰

Department of Occupational Therapy (Bachelor's)  
Macau

職能治療學系/澳門

學系提供的海外研習及交流機會，令我了解自身的專業價值及國際認可的重要；專業知識及生活經驗的累積，使我能更好地應對畢業後的各種挑戰；當初到臺灣留學KMU的選擇，令我感覺自豪。



The opportunities for overseas study and exchange provided by the department have helped me understand the value of my own profession and the importance of international recognition. By accumulating professional knowledge and life experience, I could now better cope with various challenges after graduation. I feel proud of my choice to study abroad in Taiwan at KMU.

## On-Ki Luk 陸安琪

Department of Biomedical Science and Environmental Biology (Bachelor's)  
Hong Kong

生物醫學暨環境生物學系 / 香港



高醫生物系不僅提供了高品質的教育，還給予我穩固的基礎知識和研究訓練。教職員的開放思維不僅讓我自由地追求我的研究興趣和方向，還在人生和事業規劃上給予了寶貴的建議和支持。他們的言行激勵著我，即使畢業多年仍深深地影響著我的生活。

The Department of Biomedical Sciences and Environmental Biology at Kaohsiung Medical University not only provides high-quality education but also gives me a solid foundation of knowledge and research training. The faculty's open-mindedness not only allows me to pursue my research interests and directions freely but also provides valuable advice and support in life and career planning. Their words and actions inspire me, deeply influencing my life even years after graduation.

## Shi-Hui Law 劉思慧

Department of Medical Laboratory Science and Biotechnology (Ph.D.)  
Malaysia

醫學檢驗生物技術學系 / 馬來西亞

高醫的教育質量相當高，擁有許多優秀的師資和先進的教學儀器設施，提供學生們優質的學術資源和研究機會。不論是在大學或是研究所就學期間，學校皆提供獎助學金，鼓勵學生們出國參加國際研討會以及到海外見習、參訪，增加國際間的合作也開拓學生的視野。



KMU upholds an exceptional standard of education, supported by a wealth of esteemed faculty and cutting-edge teaching facilities. The university also offers students access to top-tier academic resources and extensive research opportunities. Besides, KMU provides scholarships for undergraduate and graduate students to participate in international conferences, overseas internships, and student exchange programs, thus nurturing international collaboration and broadening their global perspectives.



# 學雜費資訊

Tuition and Miscellaneous Fees

## 每學期學雜費(臺幣) Tuition/per semester (TWD)

學制 Programs

學雜費概算 Approximate Tuition

醫學系/學士後醫學系

School of Medicine/

School of Post-Baccalaureate Medicine

73,000/ 146,000\*

牙醫系學士班

School of Dentistry

67,000/ 134,000\*

其他學士班

Other undergraduate programs

47,000~58,000

研究所

Graduate programs

49,000~61,000

\*僑、外生學雜費與本地生相同，惟外生學士後醫學系與牙醫學系收費為本地生2倍。

The tuition and miscellaneous fees are the same for international students, overseas Chinese students, and local students. However, for international students, tuition fee of undergraduate programs of School of Post-baccalaureate Medicine and School of Dentistry is twice as much as that of local and overseas Chinese students.

僑、外國學生新生得優先享有宿舍安排，可申請房型及費用依本校每學年度公告為準。

Newly admitted overseas Chinese students and international students are guaranteed housing on campus. The available room types and fees will be determined in accordance with KMU's internal regulations.

日常生活費：每月約TWD8,000~12,000

Cost of Living: TWD8,000~12,000/ per month

# 獎學金

Scholarships

## 外國學生獎學金 Scholarships for International Students

### KMU A類獎助學金

Type A

200,000~260,000元

- 本校博士班外國學生提出申請。
- 包含每月生活獎助學金、住宿費補助、學雜費補助。
- NTD 200,000~260,000 per year (monthly stipend, accommodation coverage and tuition fee are included)

### KMU B類獎助學金

Type B

80,000~140,000元

- 本校碩士班或博士班外國學生提出申請
- 包含住宿費補助、學雜費補助。
- 80,000~140,000 per year (accommodation coverage and tuition fee are included)

### KMU C類獎助學金

Type C

70,000~80,000元

- 本校大學部、碩士班與博士班之外國學生皆可提出申請。
- NTD 70,000~80,000 per year (tuition fee)

### 臺灣獎助學金

Taiwan Fellowships and Scholarships

### 教育部培英獎學金

Elite Scholarship

KMU Scholarship:

Undergraduate students can only apply for Type C, Master's students can apply for Type B and Type C, Ph.D. students can apply for all types of the scholarship.

## 僑生、港澳生獎學金

Scholarships for Overseas Chinese, Hong Kong and Macau Students

### 傑出僑生入學獎學金

OCAC Scholarship to Outstanding Overseas Compatriot Students

### 教育部優秀研究所僑生獎學金

MOE Outstanding Overseas Chinese Student Scholarship for Graduate Students

### 僑務委員會傑出及學行優良獎學金

Overseas Chinese Affairs Council Scholarship for Overseas Chinese Students with Outstanding Academic Performance

### 清寒僑生助學金

MOE Grant for Overseas Chinese Students in Financial Need

# 入學管道

Apply for Admission

身份認定資格 Regulation on Eligibility	外國學生 International Students	僑港澳生 Overseas Chinese, Hong Kong and Macau Students
	外國學生來臺就學辦法 Regulations Regarding International Students Undertaking Studies in Taiwan	僑生回國就學及輔導辦法 Regulations Regarding Study and Counseling Assistance for Overseas Chinese Students in Taiwan  香港澳門居民來臺就學辦法 Regulations Regarding Hong Kong and Macau Students Undertaking Studies in Taiwan
申請報名 Online Application	 本校單獨招生 Apply to KMU admission.kmu.edu.tw	 海外聯合招生委員會 University Entrance Committee For Overseas Chinese Students
		 本校單獨招生 Apply to KMU enr.kmu.edu.tw
申請時間 Application Period	秋季班 Fall Intake 12月至3月 December ~ March	海外聯合招生委員會 University Entrance Committee For Overseas Chinese Students 僅招收秋季班 Fall Semester Only  11月至3月(依各僑居地分梯次申請報名) November ~ March (Subject to each Place of Residence)
	春季班 Spring Intake 7月至10月 July ~ October	本校單獨招生 9月至10月 September ~ October

※新型專班相關申請資訊請參閱招生資訊網。

Details about the application for the INTENSE Program will be announced on the admissions information website.

## 招生入學聯繫窗口

Contact Info

教務處招生組

Office of Academic Affairs,  
Admissions & Student Recruitment Division

TEL: +886-7-3121101 ext.2109

E-mail: enr@kmu.edu.tw

招生資訊網



IOH學群簡介



Facebook

